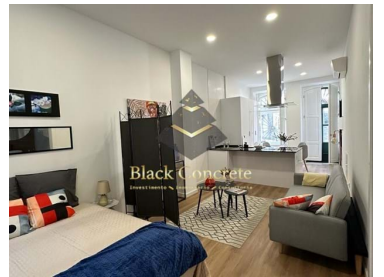




## São Vicente - Apartment



2

Bedrooms



1

Bathrooms



50

Area (m<sup>2</sup>)



77

Land Area (m<sup>2</sup>)

399 900 €

(EUR €)

## T2 Apartment With A River View in Sao Vicente

A two-bedroom Apartment with a River View is located in Sao Vicente, Lisbon. It is renovated: a double glazing and a pre-installation of air conditioning,

The kitchen is fully equipped: white furniture, Tile across the wall behind the furniture, an oven, a hob, an extractor, a microwave, a built-in dishwasher, a built-in washing machine, a Water Heater and a Built-in Combi.

There is an open balcony, two bedrooms: the First with 12m<sup>2</sup> and Wardrobe and the Second with 12m<sup>2</sup> and a wardrobe, a living room, a Hall w/ 3m<sup>2</sup> and a Full bathroom w/ 4m<sup>2</sup> with suspended crockery. False ceiling with built-in LED lights, in the WC, Kitchen, Living Room and Hall.

The building is FULLY RECOVERED (Roof, Water Columns, Electricity and Sewage, Facades,



**Seyed Azin Roshan**

Director

+351969954444 <sup>2</sup>

Azin@blackconcrete.pt

T +351 965 355 530 <sup>2</sup> · E info@blackconcrete.pt

Av da liberdade, N 110,1269-046, Lisbon

AMI 17190

<sup>1</sup> (Call to national fixed network) | <sup>2</sup> (Call to national mobile network)



BC600

Reference

Scan the QR code to view the property



Stairs, Entrance Door, Meters, Mailboxes).

The property is situated in a family, residential neighborhood with new points of commerce and services. Traditional trade, design and furniture stores, cafes and restaurants Central area, easy access, proximity to public transport, and various social facilities.

- 2-minute drive from Mercado de Santa Clara (local market):
- 2-minute drive from CCPSE - Popular Culture Center of Santa Engracia;
- 2-minute drive from Botto Machado Garden;
- 2-minute drive from TM Minimercado (Grocery Store);
- 3-minute drive from ES Gil Vicente School.

It will take you 7 minutes by foot to get to Santa Apolónia Subway Station.  
Contact us to schedule your visit.

## Property Features

- Heating
- Dishwashing machine
- Laminated floor
- Proximity: Shopping, Restaurants, Hospital, Pharmacy, Public Transport, Schools, Playground
- Floors: 3
- Double glazing
- Parking space
- Balcony
- Washing machine
- Equipped kitchen
- Air conditioning pre installation
- Built year: 2012
- Views: City view
- Central location
- Solar orientation: North, South
- Furnished



**Seyed Azin Roshan**

Director

+351969954444 <sup>2</sup>

Azin@blackconcrete.pt

**T +351 965 355 530 <sup>2</sup> · E info@blackconcrete.pt**

**Av da liberdade, N 110,1269-046, Lisbon  
AMI 17190**

<sup>1</sup> (Call to national fixed network) | <sup>2</sup> (Call to national mobile network)